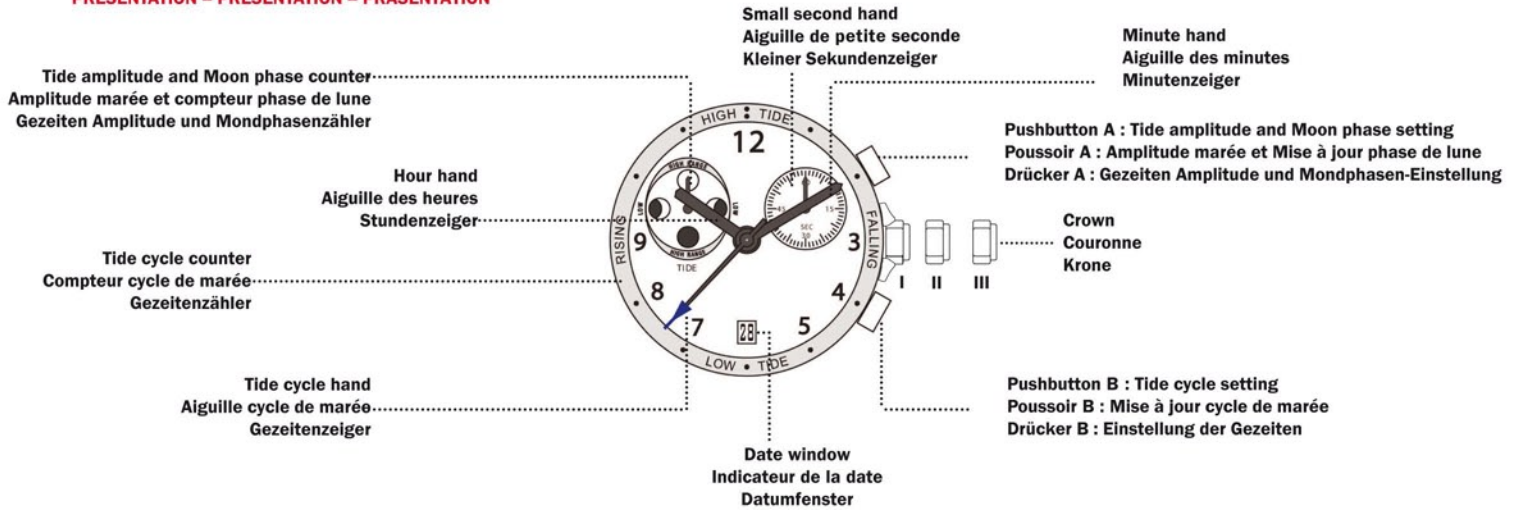


BEUCHAT

CHRONOGRAPHES

BEU1953

PRESENTATION – PRÉSENTATION – PRÄSENTATION

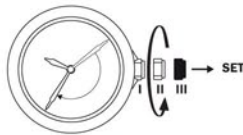


RÉGLAGES - SETTINGS - EINSTELLUNG

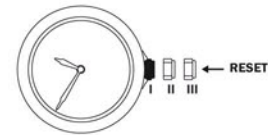
SETTING THE TIME HOUR AND MINUTE

REGLAGE DE L'HEURE ET MINUTE

EINSTELLEN DER ZEITANZEIGE STUNDEN UND MINUTEN



- 1.1 Pull the stem in pos. III
- 1.2 Turn the crown in the anticlockwise direction until the desired hour

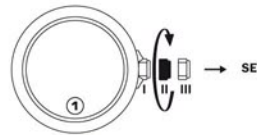


- 1.3 Push the stem in pos. I

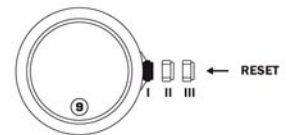
SETTING THE DATE CAUTION: NEVER CORRECT DATE BETWEEN 9 PM AND 0.30 AM.

CORRECTION DE LA DATE ATTENTION: LA CORRECTION DE LA DATE NE PEUT PAS SE FAIRE ENTRE 21H00 ET 0H30.

EINSTELLEN DES DATUMS ACHTUNG: DATUM NICHT ZWISCHEN 21 UHR UND 0.30 UHR KORRIGIEREN



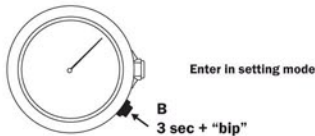
- 2.1 Pull the stem in pos. II
- 2.2 Turn the crown in the clockwise direction until the desired date



- 2.3 Push the stem in pos. I

SETTING THE TIDE FUNCTION - CENTRAL HAND

The tide cycle takes place over one revolution of the dial in 12 hours 25 minutes and 14 seconds. High tide corresponds to the "12 o'clock" position and low tide corresponds to the opposite position, hence "6 o'clock".



- 3.1 Push the pusher B during 3 sec to enter in setting mode. One bip sounds.

MISE A JOUR FONCTION MAREE - AIGUILLE CENTRALE

Le cycle de marée correspond à une rotation de 12 heures 25 minutes et 14 secondes. La marée haute correspond à la position 12h et la marée basse, à la position opposée, 6h.



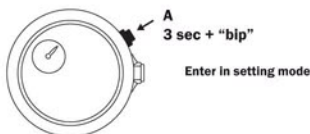
- 3.2 Press B again to set the state of the local tide. Continuous pressing on B enables rapid setting to be performed. After 3 seconds without pressing on B, a beep indicates exit from setting mode.

EINSTELLEN DER FUNKTION GEZEITEN - ZENTRUMSZEIGER

Die Phasen der Gezeiten entspricht einem Zyklus von 12 Stunden, 25 Minuten und 14 Sekunden. Die Flut entspricht der Position 12 Uhr und die Ebbe der Position 6 Uhr.

SETTING THE TIDE AMPLITUDE (MOON PHASES) - COUNTER AT 10 O'CLOCK

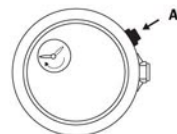
The tide amplitude counter performs one revolution in 29 days 12 hours and 44 minutes.



- 4.1 Push the pusher A during 3 sec to enter in setting mode. One bip sounds.

MISE A JOUR DE L'AMPLITUDE MAREE (PHASES DE LUNE) - COMPTEUR A 10H

Le compteur amplitude de marée exécute une rotation en 29 jours 12 heures et 44 minutes.



- 4.2 Press A again to set the tide amplitude corresponding to the moon phase. Continuous pressing on A enables rapid setting to be performed. After 3 seconds without pressing on A, a beep indicates exit from setting mode.

EINSTELLUNG DER GEZEITEN-AMPLITUDE (MONDPHASE) - ZEIGER BEI 10 UHR

Der Zeiger Gezeiten-Amplitude entspricht einer Umdrehung von 29 Tagen, 12 Stunden und 44 Minuten.

Comment:
The moon phases hand will start with its setting time, jumps step forward every 24 hours.

FUNCTIONS - FONCTIONS - FUNKTIONEN